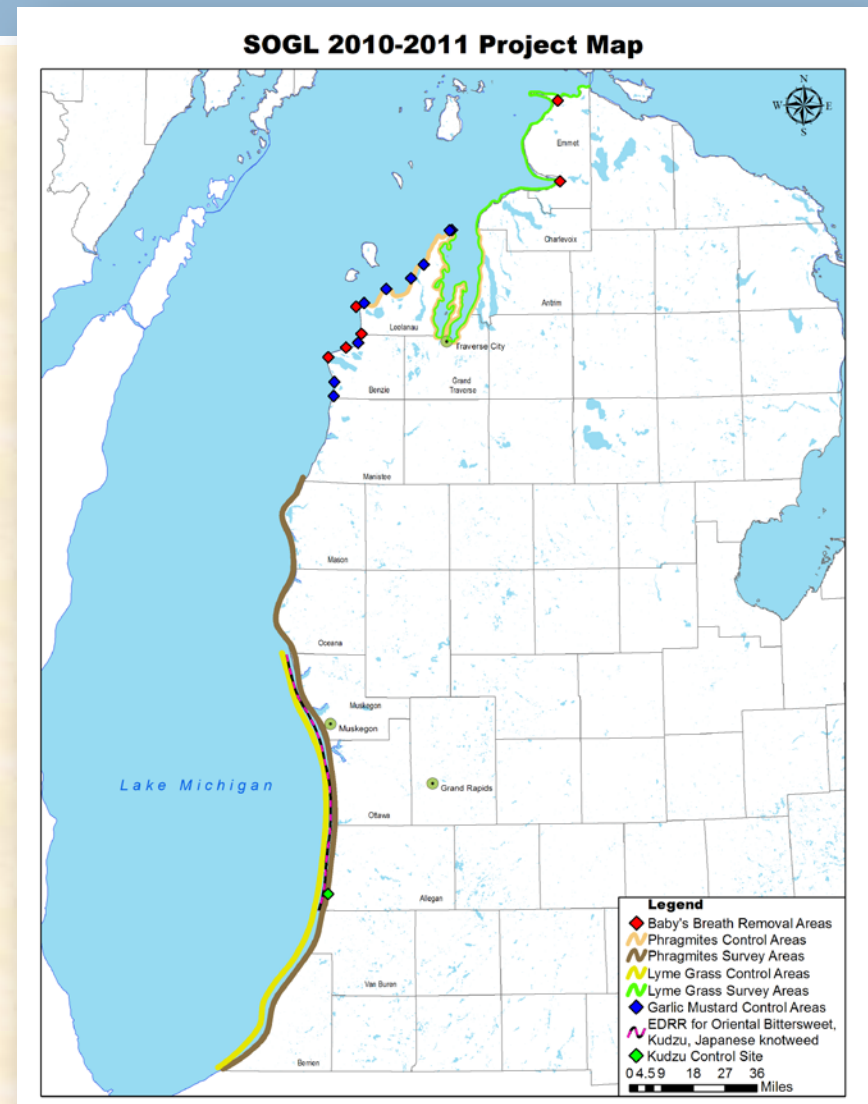




SMALL SCALE MANAGEMENT AND CONTROL FOR RAPID RESPONSE

Controlling Invasive Plants Throughout Eastern Lake Michigan

- Surveying and treatment of seven key coastal invasives
 - ▣ Newly emergent
 - Blue lyme grass
 - ▣ Regionally specific
 - Baby's-breath
 - ▣ Widespread
 - Phragmites
- Funding provided by:



Defining “Small Scale”



The Importance of Surveying



- Determine the extent of an infestation
 - ▣ Provides guidance on control methods
 - ▣ “Frames” the scale
 - ▣ Catches emergent populations
 - ▣ Makes prioritization much easier



Analogy Time!

- Without comprehensive survey data, how do you know where to begin working?



Analogy Time!

- Where are you starting?
What is the most efficient way to achieve the desired outcome?

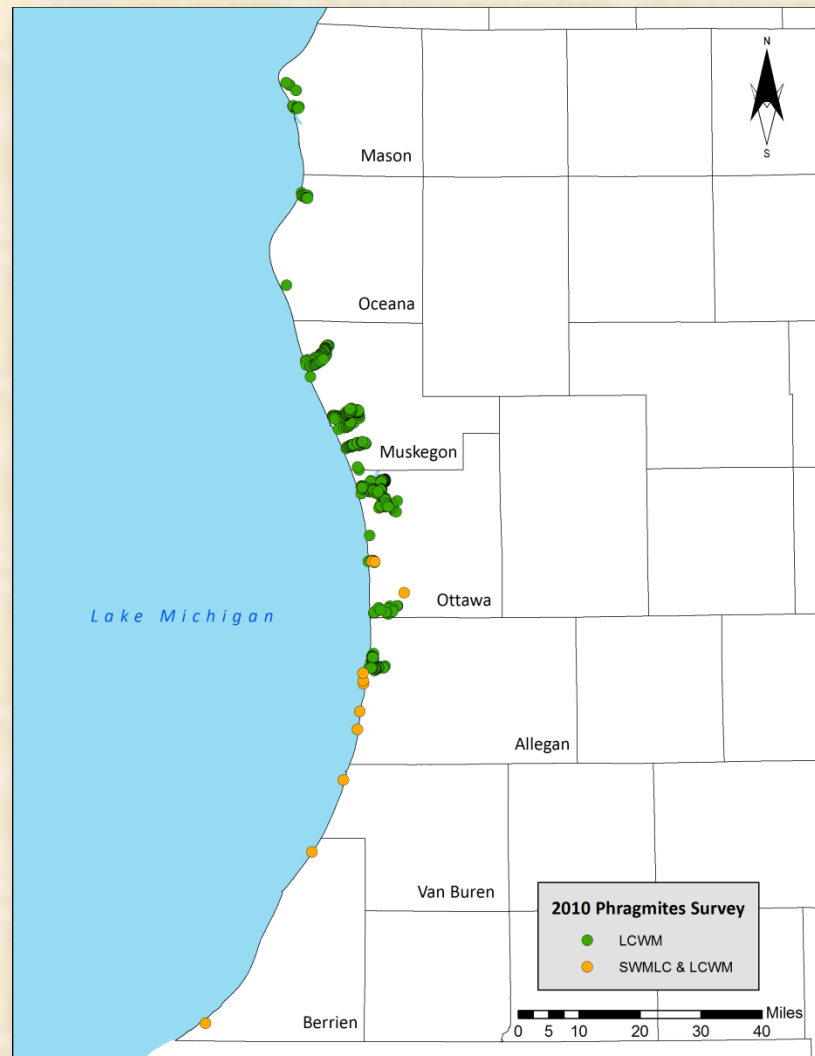


Analogy Time!

- Seeing the entire scope and prioritizing efforts will achieve results!



2010 Phragmites Survey



- Over 200 miles of on-the-ground and aerial surveying
- ▣ Land Conservancy of West Michigan
- ▣ Southwest Michigan Land Conservancy
- ▣ MDNR

2010 Phragmites Survey

□ Methods

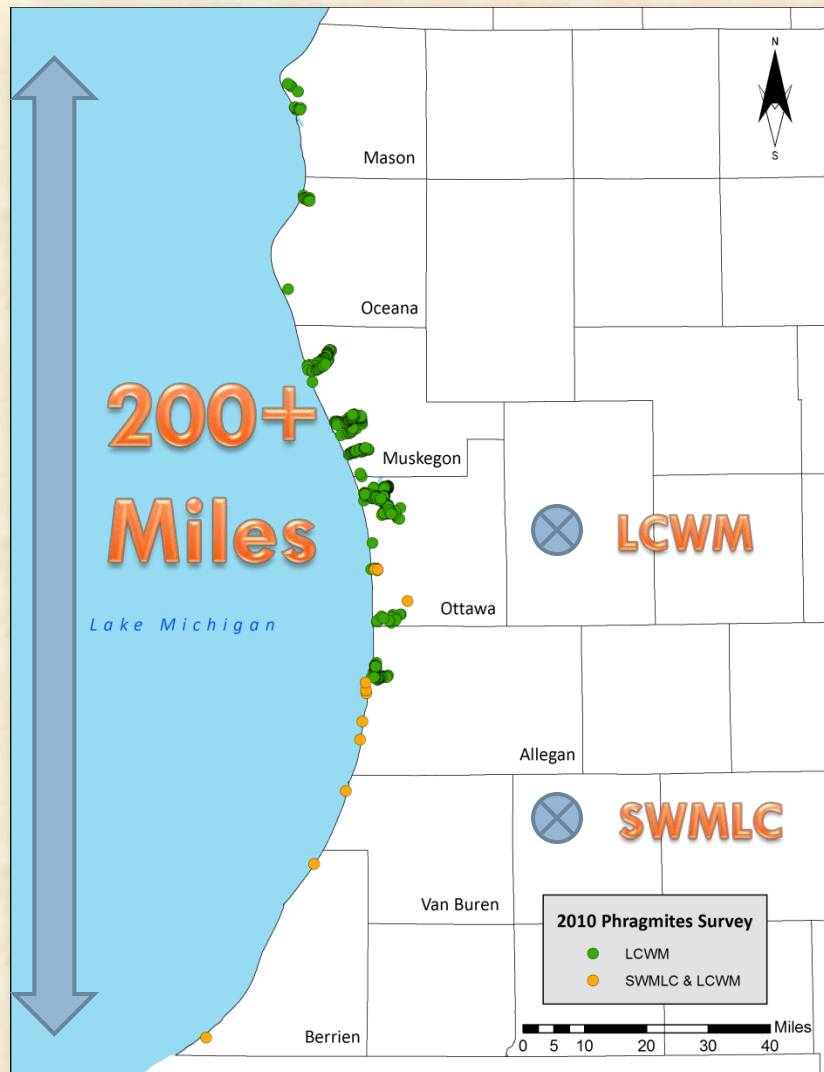


Simple...

...to complex



The Logistics of a Regional Strategy



- Getting the tools in place
- Transporting
 - People
 - Equipment
 - Supplies

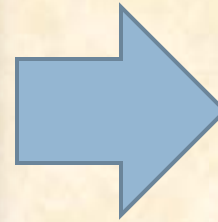
The Logistics of a Regional Strategy



- Getting the tools in place
 - ▣ Using/applying
 - People
 - Equipment
 - Supplies

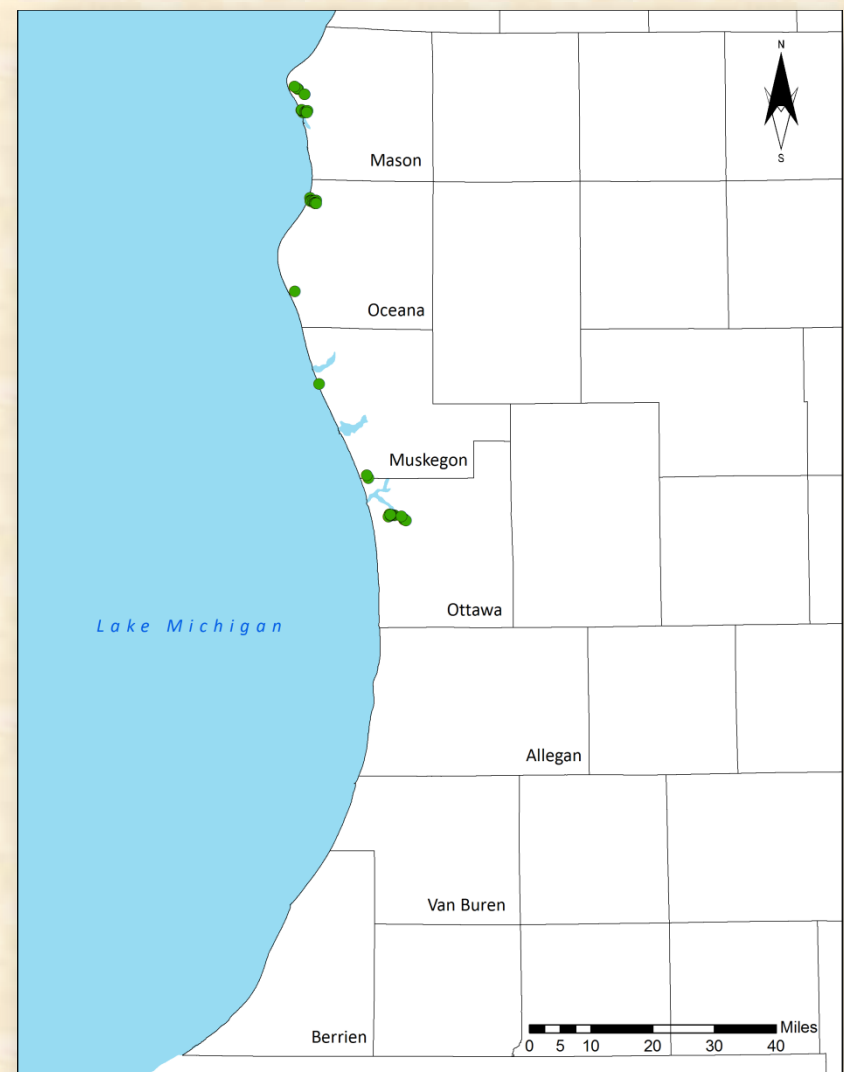
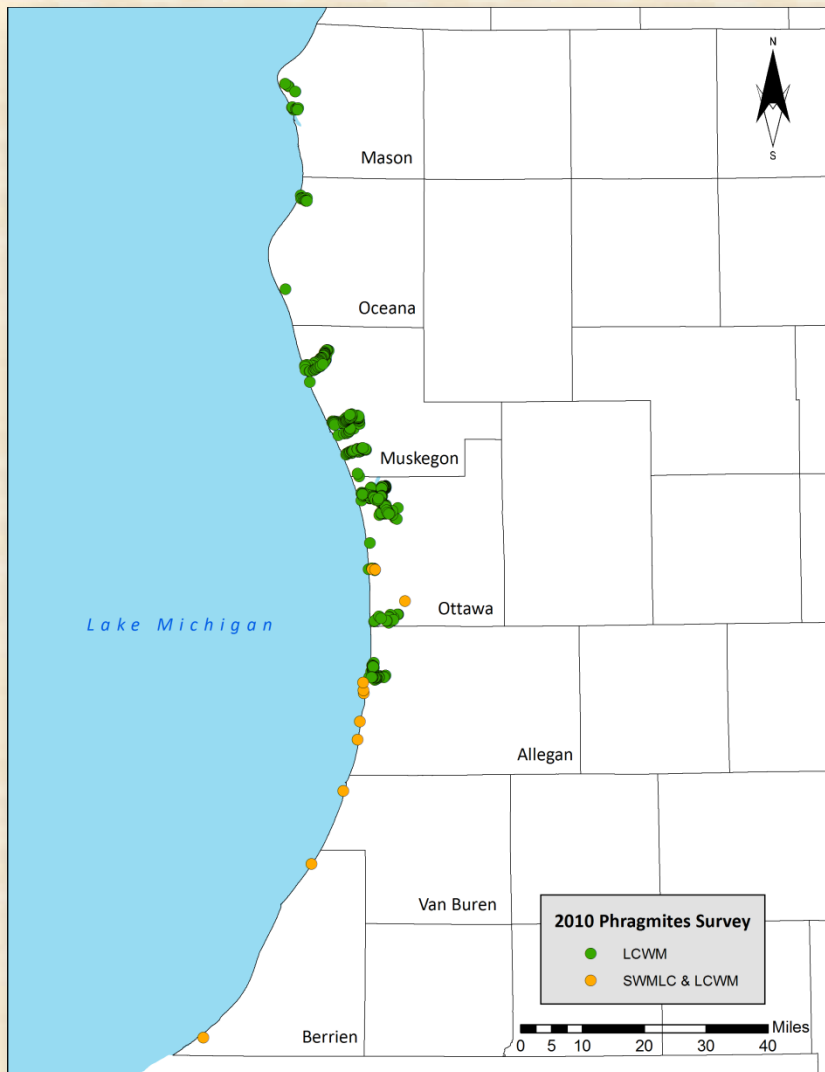
The Logistics of a Regional Strategy

- The unexpected happens...



...continued survey work can be the backup plan

Prioritizing Treatment (Primary)



Survey Outcomes: Prioritization

- Not the first choice for Early Detection/Rapid Response work...



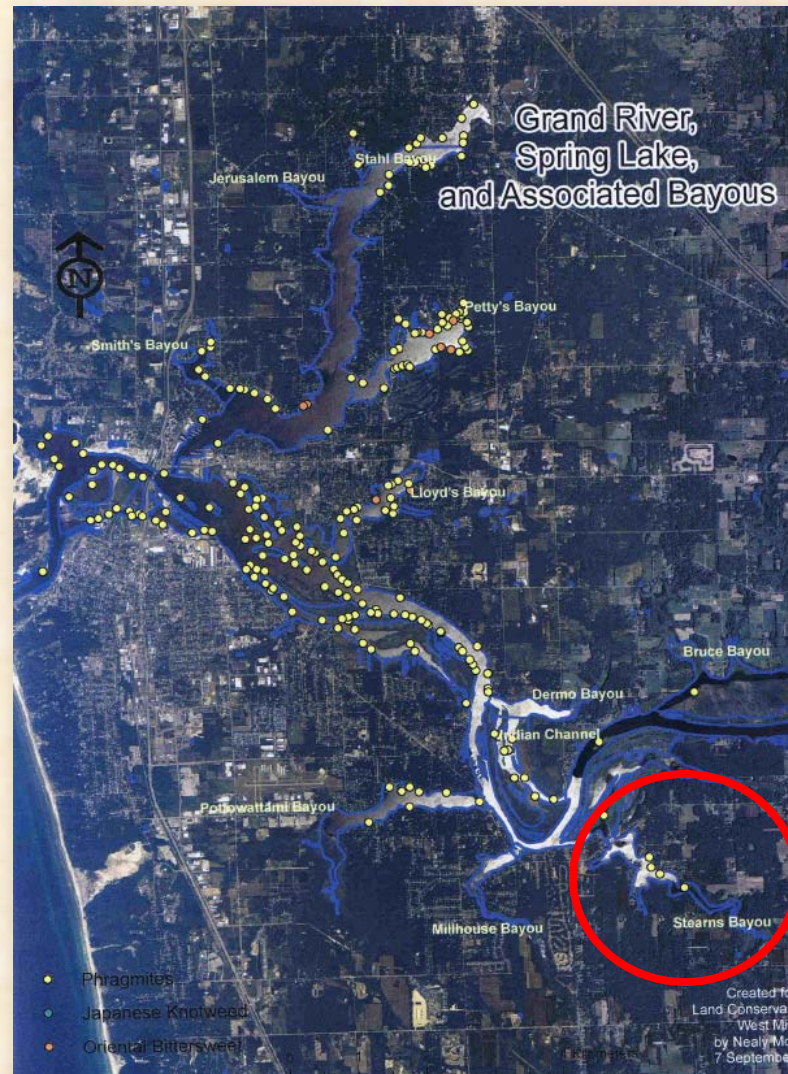
Survey Outcomes: Prioritization

- A much better return on resource investment!



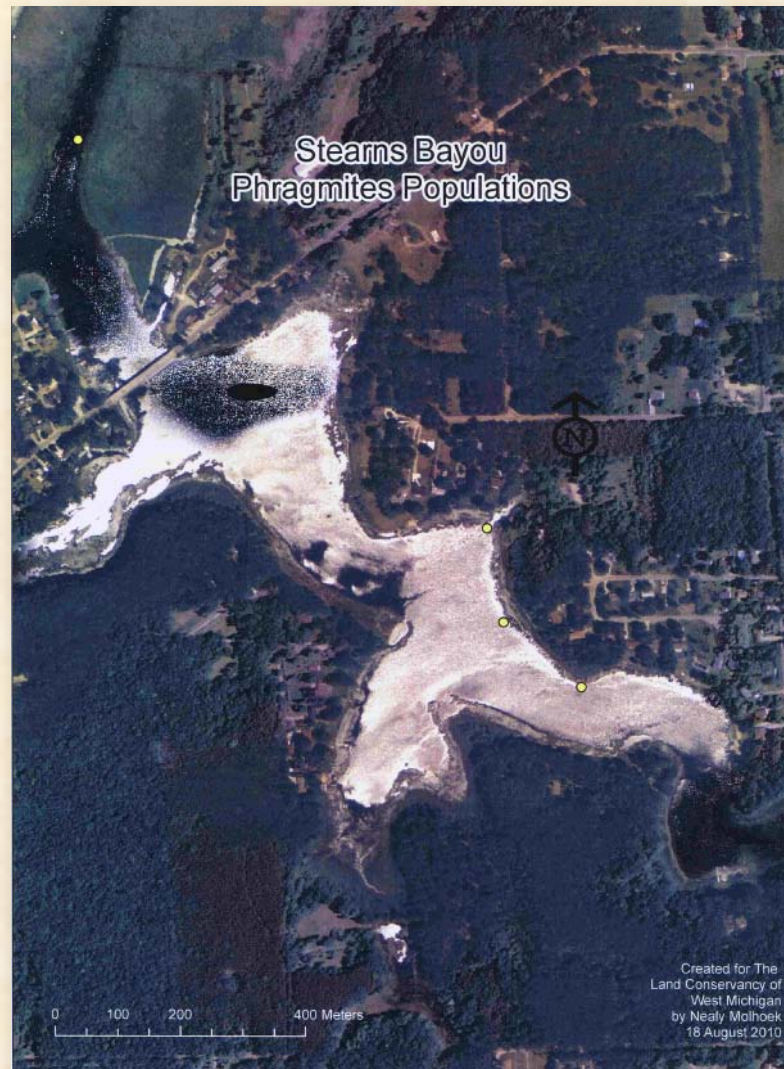
Survey Outcomes: Prioritization

- Prioritizing treatment is not always so clear-cut
 - ▣ Vectors
 - ▣ Outliers
 - ▣ Existing biodiversity
- But up close...

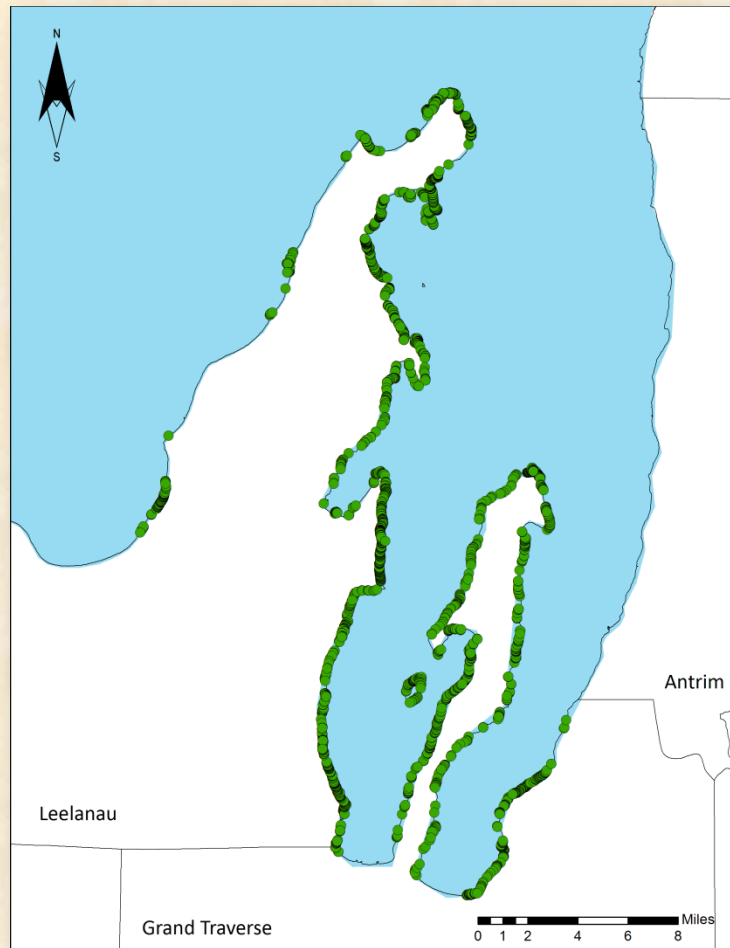


Survey Outcomes: Prioritization

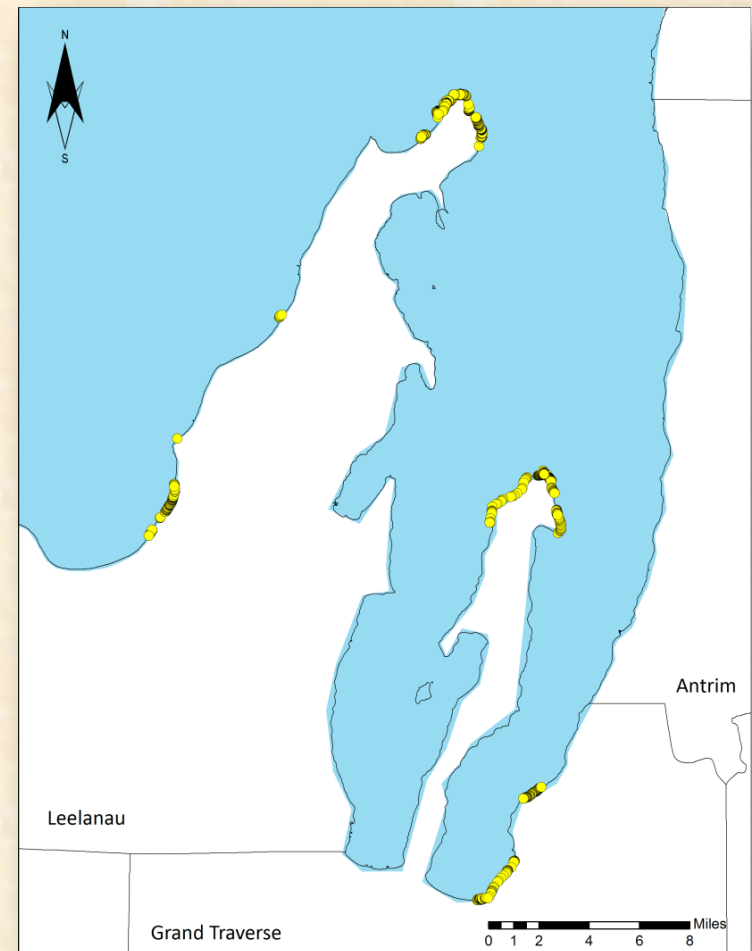
- ...there are areas where a large impact can be made with minimal resources.



Prioritizing Treatment (Secondary)



Herbicide has been applied...



...where might be the best sites for biomass removal?

Prioritizing Treatment (Secondary)

Small scale biomass removal:





Survey Outcomes: Information

- All survey data is made publicly available through MISIN
 - ▣ Track progress and quantify output
 - ▣ A record of distribution (future comparison)
 - ▣ Informs others and provides a “starting point”



Midwest Invasive Species
Information Network

Why a Regional Approach?

- Utilizing partners provides an efficient and tailored response
 - ▣ Specific knowledge in a given area
 - ▣ Utilize resources that are already in place
 - ▣ Continue to build on past work

