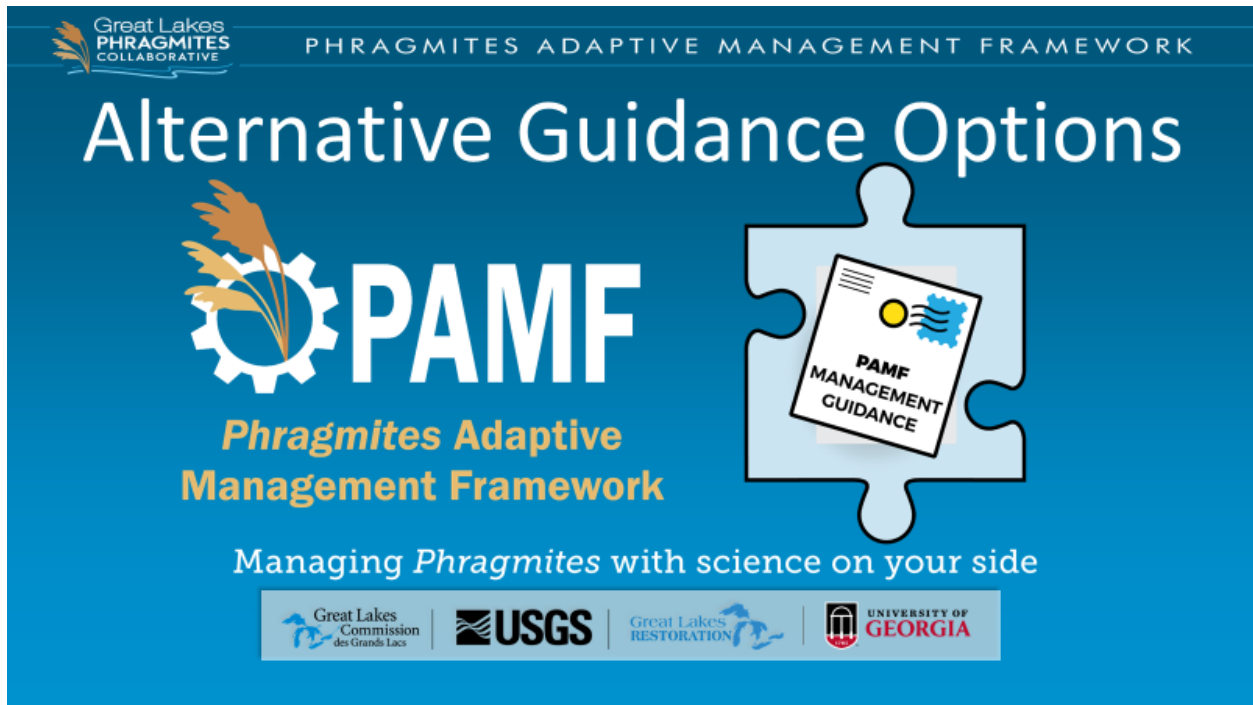




Alternative Guidance: Transcribed Video

June 2020



[In order to accommodate as many participants as possible PAMF has created a couple alternative guidance options. Alternative guidance is covered in chapter 3 of the [PAMF Participant Guide](#).]

Alternative Guidance Options

- The timing of guidance can create planning challenges
- Two alternatives available:
 - Mid-cycle forecasting guidance
 - Lag-year guidance



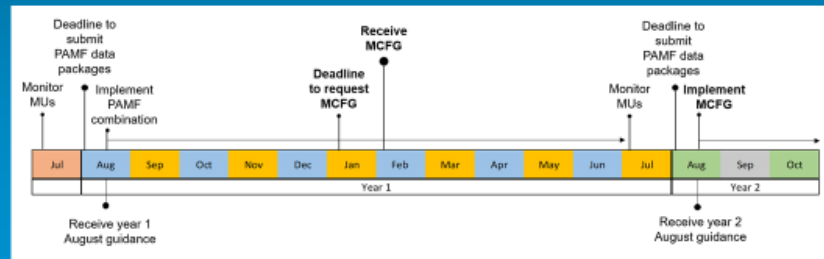
	August Guidance	Mid-Cycle Forecasting Guidance	Lag-Year Guidance
Predicted efficacy and efficiency	Best	Good	Ok
Month received	August (current year)	February	August (previous year)
Provided by request only	No	Yes	No
Lag time between state determination and implementation	Low	High	High
Lag time between management reporting and implementation	Low	Moderate	High
Lag time between model update and implementation	Low	Moderate	High

[Each August PAMF participants receive effective and efficient *Phragmites* management guidance customized for each management unit enrolled in PAMF. This is based on our most updated model and the management units current site conditions. However, this timeframe may not be ideal for managers that need to make management planning decisions earlier in the year. To provide greater flexibility to using PAMF guidance to inform decision making, PAMF is now offering two new options in addition to August guidance. The first option is requesting mid-cycle forecasting guidance and the second is implementing guidance after a lag year. While we're pleased to be able to offer these additional options, it is important to note that not all guidance is created equal. PAMF August guidance is based on the most up-to-date understanding of *Phragmites* management outcomes at the beginning of the subsequent cycle. This is the best option and should be implemented whenever possible. The next best option is requesting mid-cycle forecasting guidance, which anticipates in February what August optimal guidance might be. While mid-cycle forecasting guidance has more uncertainty than August guidance regarding the effectiveness of management actions, it incorporates more information than the third option, lag-year guidance. Lag-year guidance is simply the previous cycles guidance applied to the next cycle and should only be considered if you require more than six months of planning to implement PAMF guidance. Participants needing to utilize mid-cycle forecasting guidance or lag your guidance will continue to receive the best predictive guidance in August.]

Alternative Guidance Options

Mid-Cycle Forecasting Guidance

- Request MCFG by January 7
- Receive MCFG in early February

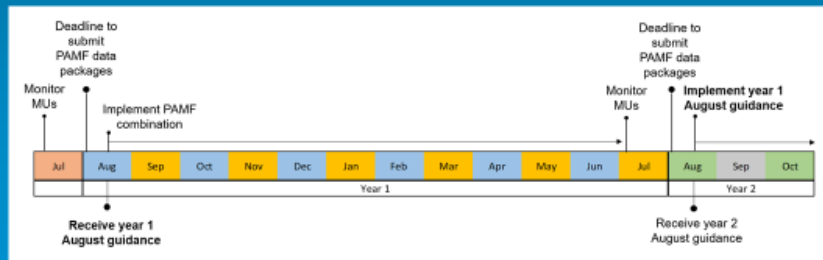


[If you do not anticipate being able to implement your August guidance due to timing and planning constraints, then requesting mid-cycle forecasting guidance (MCFG) is the next best option. Under the MCFG option, you can request a forecast of your next round of management guidance in February of each year. Management units are eligible to receive MCFG if they were monitored the previous July and are currently being managed according to one of the 16 PAMF management combinations. Participants can submit MCFG requests for eligible units on the PAMF Web Hub. Requests must be submitted prior to January 7th in order to receive MCFG by February 1st. MCFG is generated through the same model that provides guidance each August and recommends the management combination that is the most likely to be the optimal August guidance. PAMF makes this determination by predicting the chance of occurrence of each invasion state following your current management actions.]

Alternative Guidance Options

Lag-Year Guidance

- Receive guidance in August, annually
- Apply guidance the following August



[The third (and least optimal) option is to operate on a one-year delay. To implement lag-year guidance, you would monitor your management units in July prior to the start of next PAMF cycle (we will refer to it as the start of *year 1* for this scenario), save the August guidance you receive for year 2, and apply a PAMF management combination of your choice in year 1 (the Rest-Rest-Rest combination will likely lead to your MU being in a similar state as in year 1). After monitoring in July of year 2, you can carry out the management guidance received in August of year 1. Following lag-year guidance allows you a full year to plan for management actions, apply for funding, and bid for associated contracts.]

Alternative Guidance Options

Management Unit	Translocating	Dormant	Growing
Optimal	Imazapyr	Rest	Rest
Near Optimal	Glyphosate	Rest	Rest
Near Optimal	Cut Underwater	Rest	Cut Underwater



[In order to receive the best management guidance that is specific to your management unit's current state of invasion, the PAMF team recommends that you implement the guidance received in August that year whenever possible. However, when that guidance comes too late, then you may consider one of the two previously described options. If you have any questions, please contact the PAMF coordinator at pamf@glc.org]

